



The WcBc software is designed to Setup/Configure your transactions using Processing Options and a Menu-Driven interface. The following steps outline the process in order to create a WcBc transaction. Example: Setup/Configure of a **Inventory Bin/Bin Transfer**.

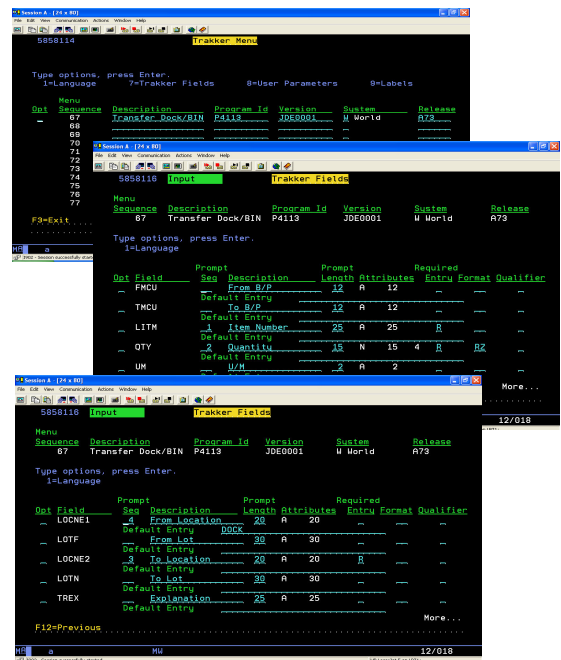
**WcBc Version Control**

1. You must create a WcBc Version for the P4113 Inventory Transfer Program ID.
2. From the WcBc Menu: Take User Parameters Menu Option and Press the F6 Key to Create a Record for the Program ID, Version, System, and Release Level.
  - Program ID: P4113
  - Version.....: JDE0001
  - System.....: "W" for World "O" for OneWorld
  - Release.....: A73
3. The View of the Processing Options will display and you enter those parameters that apply to your PeopleSoft™ settings.

1.Document Type	IT
2.From Location/Lot	
1=Default from Primary Loc.	
Blanks= No Default	
3.To Location/Lot	
1=Default from Primary Loc.	
Blanks=No Default	
4.Journal Entries	
Specific Version (P0911)	
5.Item Ledger	
Specific Version (P4111)	
FUTURE USE	
6.Warehouse Request	
Specific Version (P46100)	
FUTURE USE	
7.Lots on hold	
1=Allow if lot on hold	
Blanks=Disallow if Lot on hold	
8.Transfer Quantity	
1=Allow Negative On-Hand	
Blanks=Disallow Negative On-Hand	
9.Allow the Creation of Item Location	
Blanks=Records will be Added	
1=Disallow Creation	
10.Journal Entry (Suppress)	
G/L Account Entries (F0911)	
Blanks=Records will be Added	
1=Same Account will NOT be Written	

**WcBc Trakker Menus**

1. From the WcBc Menu: Take Trakker Menus Menu Option and find a Transaction ID that you can use. The Transaction ID is NOT specific to any given Program ID.
  - Text.....: Transfer Dock/Bin **Note** - This is the exact text that will display on the Client.
  - Program ID: P4113
  - Version.....: JDE0001
  - System.....: "W" for World "O" for OneWorld
  - Release.....: A73
2. From the Trakker Menu: Take Option "7" Trakker Fields to display the fields that can be prompted for on the Client.
  - Prompt Sequence: Enter the Sequence in which you want to Prompt for.
  - Text: **Note** - This is the exact text that will display on the Client.
  - Length: Prompt Length is Defaulted from the Data Field Length.
  - Defaulted Entry...: Enter any defaulted entries that the Client will send to the iSeries™. The Client will NOT prompt for if the defaulted entry has been loaded.
3. From the Trakker Menu: Take Option "9" Labels to print any thermal labels once the transaction is accepted.



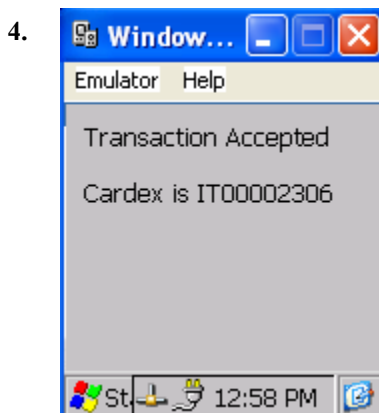
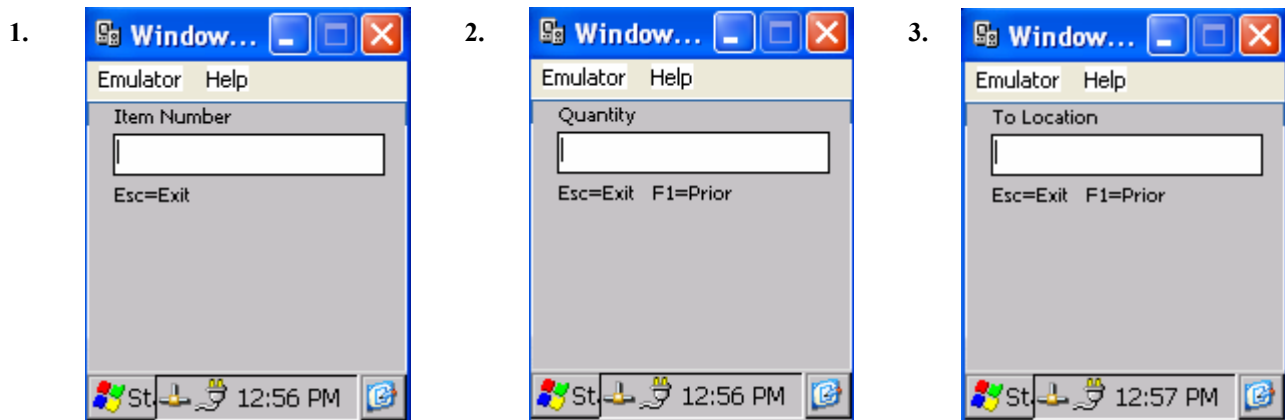


### WcBc User Security

1. From the WcBc Menu: Take User Security Menu Option and grant the Users authority to the transaction that you just Created.

- Grant/Revoke Authority: Enter a "1" to Grant Authority.

### WcBc screen images from the Client handheld. Have the User Signon to the Handheld.



1. The Item number will be prompted and validated against the PeopleSoft™ system. The WcBc system will return with either the Item Attributes or with a Error Message.
2. The Quantity will be prompted.
3. The Location To will be prompted.
4. Notice that the From Location was NOT prompted for on the Client because the Defaulted Entry has been Loaded with "DOCK".

- **Once all the fields have been prompted, Then the information is sent to the iSeries™ and validated against the PeopleSoft™ and returns with the Cardex number or an Error Message.**

For more information on WcBc,  
Phone: (814) 437-2822  
Email: [kmong@wcinfo.com](mailto:kmong@wcinfo.com)  
[www.wcinfo.com](http://www.wcinfo.com)

