

# How Coldspring utilizes Data Collection/Bar Code Inventory Control.

**Session ID: 102440**

Beginning in 1898 with a single quarry and a hardworking stonecutter, Coldspring has become one of the largest natural stone manufacturers serving commercial, landscaping, memorialization and residential customers.

**Prepared by:**

Nathan Kuebelbeck  
Business Analyst/Developer



COLLABORATE 16

TECHNOLOGY AND APPLICATIONS FORUM  
FOR THE ORACLE COMMUNITY



#C16LV



# Nathan Kuebelbeck BIO

Received my AAS from Saint Cloud Technical And Community College

Received my BA from Minnesota School Of Business

I've been with Coldspring for 8 years. 5 years doing PC support. 3 years in E1. Couple of upgrades (8.12-9.0 and 9-0 to 9.1). I do a majority of the E1 development at Coldspring. Ranging from FDA to CBSFN and anywhere in between.

Married with a couple kids. Hobbies include web development, console video games, fishing and golfing



COLLABORATE 16

TECHNOLOGY AND APPLICATIONS FORUM  
FOR THE ORACLE COMMUNITY



# About Coldspring



COLLABORATE 16

TECHNOLOGY AND APPLICATIONS FORUM  
FOR THE ORACLE COMMUNITY

- E1 since 2007
  - Finance
  - Distribution
  - Transportation
  - Manufacturing
  - BI Publisher
  - Inventory
  - Address Book
  - Procurement
  - Job Cost
  - Contract Billing
  - Fixed Assets
- Markets Served
  - Memorial
  - Residential
  - Building Materials
  - Tools
- Product Offering
  - Blocks
  - Slabs
  - Memorials
  - Bronze Memorials
  - Diamond Tools
  - Cut to Size



# Coldspring E1 Platform Information



COLLABORATE 16  
TECHNOLOGY AND APPLICATIONS FORUM  
FOR THE ORACLE COMMUNITY



## Current Platform Information

- 2 IBM i E1 Servers 9.1 (Tools 9.1.4.6)
  - PD/NON-PD
- 2 Windows E1 Servers
- 3 Windows Web Sphere web client servers
- 2 Windows Web Sphere BSSV servers
- 100-200 users
- Bolt-on
  - Credit Card
  - Shopping Cart/E-Commerce
  - Tax

# Coldspring Hardware/Coverage



COLLABORATE 16  
TECHNOLOGY AND APPLICATIONS FORUM  
FOR THE ORACLE COMMUNITY

4 Locations

1. Minnesota
2. Texas
3. New York
4. California

Intermec Ck3 handhelds(110)

Cisco WAP (52)

1-2 Square Miles of coverage/usable area

2-3k transactions daily



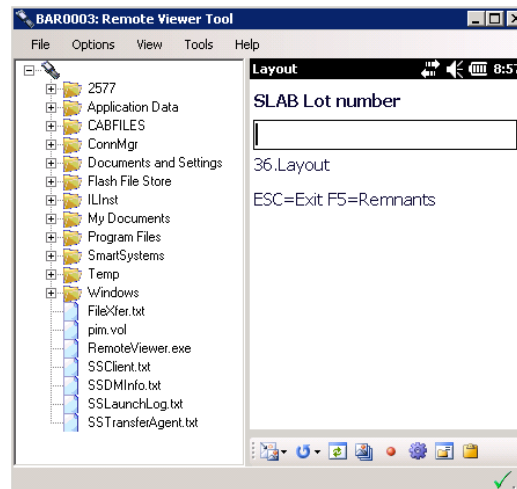
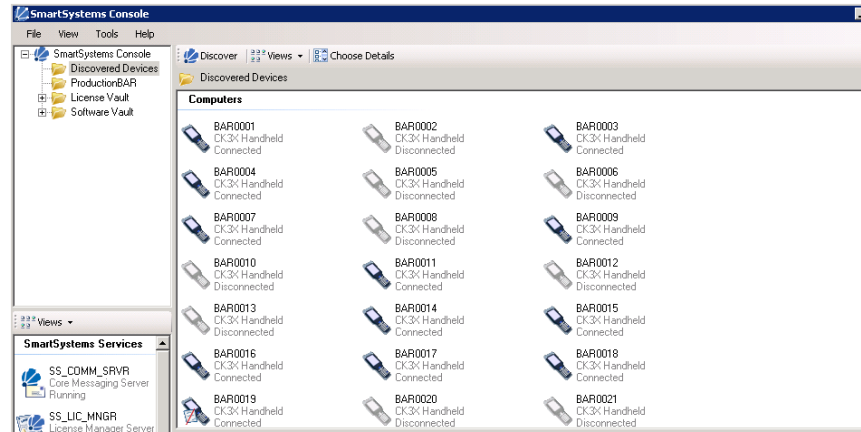
# Intermec Smart Systems



COLLABORATE 16

TECHNOLOGY AND APPLICATIONS FORUM  
FOR THE ORACLE COMMUNITY

- Single, easy-to-use portal for hands-free device provisioning, deployment and management of Intermec devices
- Minimizes the effort spent on software upgrades, monitoring and troubleshooting
- Centralized, easy, stand-alone operation, remote administration and license activation
- User-friendly mechanism for One-Step Provisioning of software bundles
- Scan-to-Connect barcodes enable single step connection to the network and software loading directly from FTP/HTTP sites
- Monitor and track Intermec data collection equipment
- Integrates with industry leading device and system management solutions



Source:  
<http://www.intermec.com/products/smrtsysfoundation/>



# Coldspring Goals for Manufacturing

- Increase stone yield
- Increase visibility to production
- Real time transactions
- Barcoded production Tickets
- Accurately track job costs



COLLABORATE 16

TECHNOLOGY AND APPLICATIONS FORUM  
FOR THE ORACLE COMMUNITY





# World Class Information Systems



COLLABORATE 16

TECHNOLOGY AND APPLICATIONS FORUM  
FOR THE ORACLE COMMUNITY

## Why World Class Information Systems?

- AS400 software
- Knowledgeable with E1 Manufacturing System
- Wide Selection of Stock Applications
- Competitive Pricing
- Excellent Referrals





# High Level Coldspring process



COLLABORATE 16  
TECHNOLOGY AND APPLICATIONS FORUM  
FOR THE ORACLE COMMUNITY

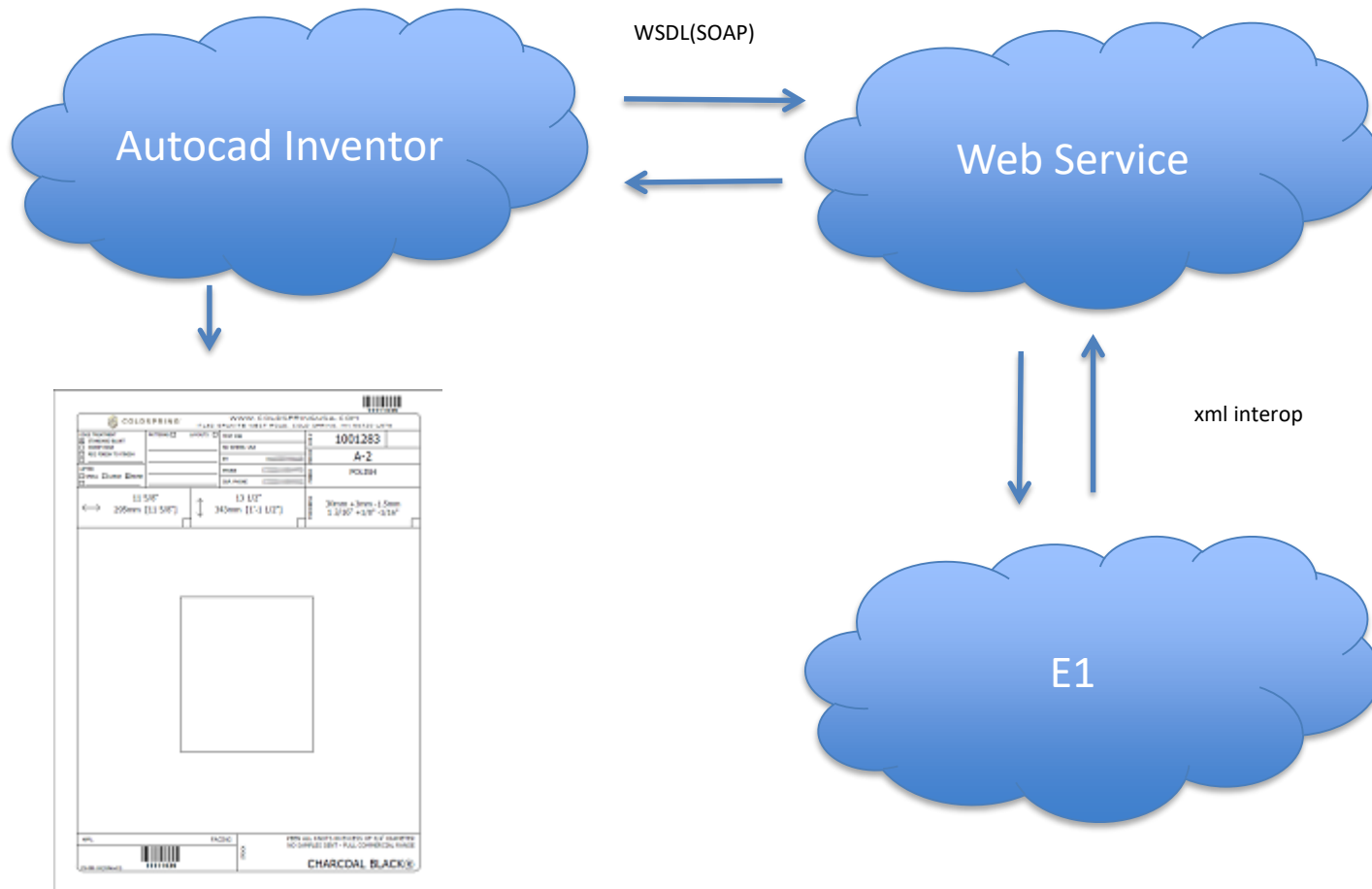


Source: <https://www.coldspringusa.com/about-coldspring/sustainability/stone-utilization/>

# Production Tickets



COLLABORATE 16  
TECHNOLOGY AND APPLICATIONS FORUM  
FOR THE ORACLE COMMUNITY





COLLABORATE 16

TECHNOLOGY AND APPLICATIONS FORUM  
FOR THE ORACLE COMMUNITY



# A Video Demonstration

## Production Layout

## WCINFO APP



# Coldspring/ World Class Information System Layout Demo

# Work Order Routings (P311221) WCINFO Executing BSSV



COLLABORATE 16  
TECHNOLOGY AND APPLICATIONS FORUM  
FOR THE ORACLE COMMUNITY

10.CNC  
11.CARVING  
12.SANDED  
13.MOVE TO SAMPLES  
14.FINISH  
18.MOVE TO MAIN  
19.MOVE TO WEST  
21.Jointing  
25.Inventory Transfers  
30.Change Finish on SLAB

Enter Menu Option

Order Number  
11050313  
21.Jointing  
ESC=Exit



Quantity  
1.00 I  
21.Jointing  
ESC=Exit F1=Prior



Flash Message  
Transaction Accepted  
Cardex is: 11050313



# Work Order Completion (P31123) WCINFO Executing BSSV



COLLABORATE 16  
TECHNOLOGY AND APPLICATIONS FORUM  
FOR THE ORACLE COMMUNITY

Inspect

**Order Number**

11125376  
32.Inspect  
ESC=Exit



Inspect

**Qty Completed**

1  
32.Inspect  
ESC=Exit F1=Prior



Flash Message

Transaction Accepted  
Cardex is: 11125376



# Manufacturing Improvements

- Eliminated the paper process of recording transactions
- Speed up process
- Accurate costs using job cost
- Real time tracking work in process
- Stone yield (TBD)



COLLABORATE 16

TECHNOLOGY AND APPLICATIONS FORUM  
FOR THE ORACLE COMMUNITY



# Block to Slab (Inventory Re-class P4116) WCINFO Executing BSSV



COLLABORATE 16  
TECHNOLOGY AND APPLICATIONS FORUM  
FOR THE ORACLE COMMUNITY



Block to SLABS

**Block Lot Number**

25.11.111

85.Block to SLABS

ESC=Exit



Block to SLABS

**F or P**

p

Block:25.11.111



Block to SLABS

**More Slabs? - Y/N**

y

Batch:00653667



Block to SLABS

**Slab Thickness**

32

Slab:14-910025

Qty:6.

Alloc:41

Fin:04

Saw #:081

Length:120.

Height:65.

ESC=Exit F1=Prior



Block to SLABS

**Enter Quantity:**

6

Slab:14-910025



Block to SLABS

**Slab Lot**

14-910025

Batch:00653667



Block to SLABS

**More Slabs? - Y/N**

n

Batch:00653670



Continued on next slide



# Block to Slab (Inventory Re-class P4116) WCINFO Executing BSSV



COLLABORATE 16  
TECHNOLOGY AND APPLICATIONS FORUM  
FOR THE ORACLE COMMUNITY



```
Block to SLABS
-----
Slabs/Yield Batch#0065367
14-910025 120x032x065
14-910026 120x032x065
14-910027 120x032x065
14-910028 120x032x065
14-910029 120x032x065
14-910030 120x032x065
Yield:      36.
***End of List***
-----
Enter=Complete Esc=Clear
```

# Inventory Issue (P4112) WCINFO Executing BSSV



COLLABORATE 16  
TECHNOLOGY AND APPLICATIONS FORUM  
FOR THE ORACLE COMMUNITY



Issue to Grout

Lot Number
12-136993
86.Issue to Grout
ESC=Exit



Flash Message

Transaction Accepted

Cardex is: 12-13699

Flash Message

Error

No Inventory Available, Select  
F41021

Press Enter to Clear.

# Inventory Adjustments(P4114) WCINFO Executing BSSV



COLLABORATE 16  
TECHNOLOGY AND APPLICATIONS FORUM  
FOR THE ORACLE COMMUNITY

## Slab

Resize Slab

**Slab/Lot:**  
14-428386  
77.Resize Slab  
ESC=Exit



Resize Block

**Length**  
75  
78.Resize Block  
ESC=Exit F1=Prior



Resize Block

**Width**  
35  
78.Resize Block  
ESC=Exit F1=Prior



Flash Message

Transaction Accepted  
Cardex is: 14-42838

## Block

Resize Block

**Block/Lot**  
95-14-105  
78.Resize Block  
ESC=Exit



Resize Block

**Length**  
75  
78.Resize Block  
ESC=Exit F1=Prior



Resize Block

**Thickness**  
50  
78.Resize Block  
ESC=Exit F1=Prior



Resize Block

**Width**  
35  
78.Resize Block  
ESC=Exit F1=Prior



# Inventory Improvements

- Eliminated the paper process of recording transactions
- Speed up process
- Instant transactions
- Eliminate downstream issues
- Accurate inventory
- Educated users



COLLABORATE 16

TECHNOLOGY AND APPLICATIONS FORUM  
FOR THE ORACLE COMMUNITY



# Cycle Count – Slabs (+/- 5,000 slabs)

## WCINFO APP



COLLABORATE 16

TECHNOLOGY AND APPLICATIONS FORUM  
FOR THE ORACLE COMMUNITY

### Before

1. Stop all transactions
2. Select Items for Cycle Count
3. Read/Write every slab
4. Turn in work sheets
5. Data Entry
6. Run Edits Reports
7. Recount any glaring issues
8. Submit Cycle Count

### Resources

1 day

100 head count

### After

1. Stop all transactions
2. Select Items for Cycle Count
3. Enter Count Number into handhelds
4. Scan slabs
5. Run Edit Reports
6. Recount any glaring issues
7. Submit Cycle Count

### Resources

2-3 hours

50 head count





COLLABORATE 16

TECHNOLOGY AND APPLICATIONS FORUM  
FOR THE ORACLE COMMUNITY



## Other World Class transactions

- Work Order Scrap (BSSV)
- Pick Slip Generation (WCINFO)
- Reprint Pick SLIP (WCINFO)

# QUESTIONS?

---



**COLLABORATE16**  
TECHNOLOGY AND APPLICATIONS FORUM  
FOR THE ORACLE COMMUNITY



## *Quest is the home for PeopleSoft and JD Edwards Users*



COLLABORATE 16

TECHNOLOGY AND APPLICATIONS FORUM  
FOR THE ORACLE COMMUNITY

### **Visit the Quest International Users Group Booth #323**

- Let us show you how to leverage the Quest community to maximize your ERP investment
- Receive your personalized Quest Activation Plan & learn how to make the most of your membership
- Plus, find out more about our upcoming events PeopleSoft RECONNECT (July 19-21) and JD Edwards INFOCUS (August 8-10)

