

WcBc

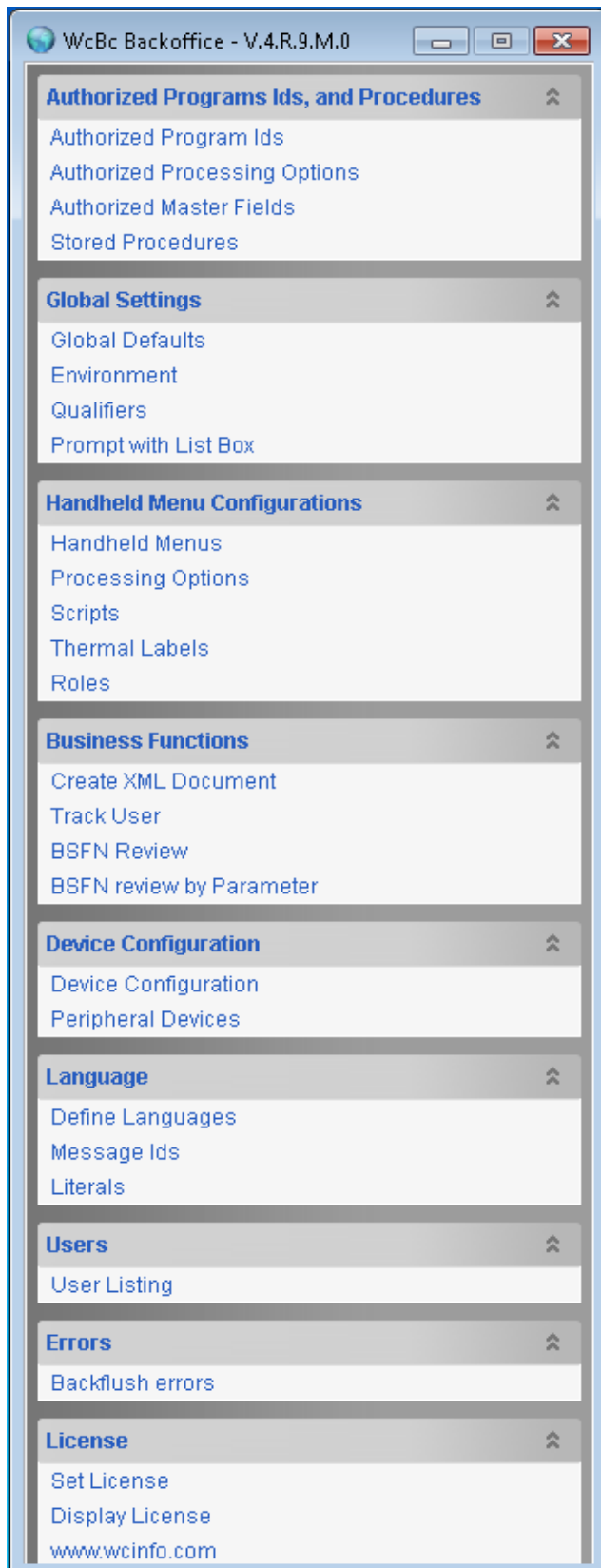
BACKOFFICE

WORLD CLASS INFORMATION SYSTEMS, INC.

CONTENTS

WcBC Menu	2
Authorized Program Ids	3
Authorized Processing Options	5
Authorized Master Fields	6
Stored Procedures	8
Global Defaults	9
Environment	11
Qualifiers	12
Prompt with List Box	13
Handheld Menus	14
Processing Options	15
Scripts	16
Thermal Labels	18
Roles	20
Create XML Document	21
Track User	22
BSFN Review	23
BSFN Review by Parameter	24
Device Configurations	25
Peripheral Devices	26
Languages	27
Message Ids	28
Literals	29
User Listing	30
Backflush Errors	31
Licenses	32
How to create a new option	33
Appendix	34

WCBC MENU: WcBc Main Menu for Backoffice.



AUTHORIZED PROGRAM IDS: Maintenance to Authorized Programs.

Program Id	Short Description	Medium Description	Long Description	Inquiry Program (Y/N)	Download Program (Y/N)
New Pgm	?	?	Add New Program Id	N	N
GENPRT	Gen Lbl	Print Generic Labels	Print Generic Labels	N	N
P31113	Work Order	Work Order Issue	Work Order Issue	N	Y
P31113UNPL	Un-Plan	Unplanned Issue	Work Order Issue Unplanned	N	N
P31114	WO Comp	Work Order Completion	Work Order Completion	N	Y
P31115	WO Proce	Work Order Process C	Work Order Process Completion	N	N
P31122	Prod Inq	Production Reporting	Production Reporting Inquiry	Y	N
P311221	Qty & Hour	Quantity and Hours	Quantity and Hours	N	N
P31123	SB	SuperBackflush	SuperBackflush	N	Y
P3711	QM	QM Test	QM Test Results	N	Y
P40095	Chg B/P	Change Default B/P	Change Default Branch Plant	N	N
P4100PRT	Loc Lbl	Print Location Label	Print Location Labels	N	N
P4101PRT	Item Lbl	Print Item Label	Print Item Labels	N	N

These are the current program ids that have been setup and configured in WcBc. There are some custom programs where JD Edwards did not have a program. Example: GENPRT that prints generic thermal labels.

To **Add** a record, Go to the first line where it states “New Pgm” and enter the required fields. You may have to Press Refresh to display on the list.

- **Program Ids:** This is the Program Id attached to the WcBc barcode transaction. Example “P4113”.
- **Short Description:** Short informational field describing the barcode transaction.
- **Medium Description:** Medium informational field describing the barcode transaction.
- **Long Description:** Long informational field describing the barcode transaction.
- **Inquiry Program (Y/N):** If this transaction is an inquiry program like “P41026”, place a “Y” in this field.
- **Download Program (Y/N):** If this transaction is a download program like “P4312” then place a “Y” in this field. A Download program would be where it goes through multiple levels. In Purchase Order receipts the user enters a Purchase Order number first then display the details. The Purchase Order number would be the 1st level and the Purchase Order Details would be the 2nd level.
- **Print Thermal Labels (Y/N):** If this transaction is allowed to print thermal labels then place a “Y” in this field. These values are built into the application.

Type HP01: Header Label with prompt on the # of labels.

Type DP01: Detail Label with prompt on the # of Labels.

Type DS01: Container Label.

Type HT01: Header Label with # of Labels which is determined by the Transaction Qty.
Type HT02: Header Label with # of Labels which is determined by the Transaction Qty.
Type HT03: Header Label with # of Labels which is determined by the Transaction Qty.
Type HT04: Header Label with # of Labels which is determined by the Transaction Qty.
Type DO01: Detail Label with # of Labels comes from the value of 1.
Type DT01: Detail Label with # of Labels which is determined by the Transaction Qty.

- ***Input Fields required From:*** This is not currently used.
- ***Input Fields required To:*** This is not currently used.
- ***Download Type:*** This is not currently used.
- ***Role:*** This is not currently used.

AUTHORIZED PROCESSING OPTIONS: Maintenance to Authorized Processing Options.

WcBc Backoffice - Authorized Processing Options

Select Program Id: Description: **Inventory Issue**

S...	Sub Seq	Processing Option	Program Id	System	Release
0	0	New Processing Option	Current	?	?
1	1	JD Edwards Business Function (BSFN)	P4112	O	B9.2
2	1	* User Id:	P4112	O	B9.2
3	1	* Password:	P4112	O	B9.2
3	2		P4112	O	B9.2
4	1	* BSFN (F4114BeginDocument) for XMLCALLOBJ	P4112	O	B9.2
5	1	(F4114EditLine)	P4112	O	B9.2
6	1	(F4114EndDocument)	P4112	O	B9.2
7	1	(F4114ClearDetailStack)	P4112	O	B9.2
7	2		P4112	O	B9.2
8	1	* Process XMLCALLOBJ at selected times	P4112	O	B9.2
8	2	* 1=Run all BSFN during Transaction	P4112	O	B9.2
8	3		P4112	O	B9.2
9	3	Processing Options	P4112	O	B9.2
10	1	Enter document type? This is required.	P4112	O	B9.2
10	2	szDocumentType">	P4112	O	B9.2

Exit Delete Refresh System: O B9.2

These are the JD Edwards and Custom Processing Options/Parameters that are allowed.

To **Add** a record, Go to the first line where it states "New Processing Option" and enter the required fields. You may have to Press Refresh to display on the list.

- **Sequence:** The sequential number tied to the processing option/parameter. These are controlled by the WcBc application. The Sequence and Sub Sequence must be unique.
- **Sub Sequence:** You can have several comments for each question. Questions can only be answered on Sub Sequence 1.
- **Processing Option:** The text to display when the actual versions are entered. For the values to be mapped into the BSFN then enter the XML parameter. Example the answer to szDocumentTye"> will be placed into the merged XML parameter. **NOTE:** The XML Mapping must be placed in Sub Sequence 2.
- **Program Id:** The Program Id attached to the WcBc barcode transaction.
- **System:** the JD Edwards system. O=Enterprise One (OneWorld) or W=World.
- **Release:** the JD Edwards release.

AUTHORIZED MASTER FIELDS: Maintenance to Authorized Master Fields/Alias.

WcBc Backoffice - Authorized Master Fields

Select Program Id: Description: **Inventory Issue** Download Application N

Drag a column header here to group by that column.

Sequence	Field Name	Length	Decimals	Field Text	(A)Alpha (N)u...	I/O/D	Program I
?	New File	0	0	New Text		?	
1	MCU	12	0	<szBranchPla...	A	I	P4112
2	LITM	25	0	<szItemNumb...	A	I	P4112
3	QTY	15	4	<mnTransacti...	N	I	P4112
4	UOM	2	0	<szTransactio...	A	I	P4112
5	LOCN	20	0	<szDisplayedL...	A	I	P4112
6	LOTN	30	0	<szLotNumber...	A	I	P4112
7	RCD	3	0	<szReasonCo...	A	I	P4112
8	LPN	20	0	<szFromLicen...	A	I	P4112
9	SBL	8	0	<szSubledger...	A	I	P4112
10	SBLT	1	0	<szSubledger...	A	I	P4112
11	NLBL	3	0	Number of La...	N	I	P4112
13	ANI	29	0	<szAccountNu...	A	I	P4112

Exit Delete Refresh

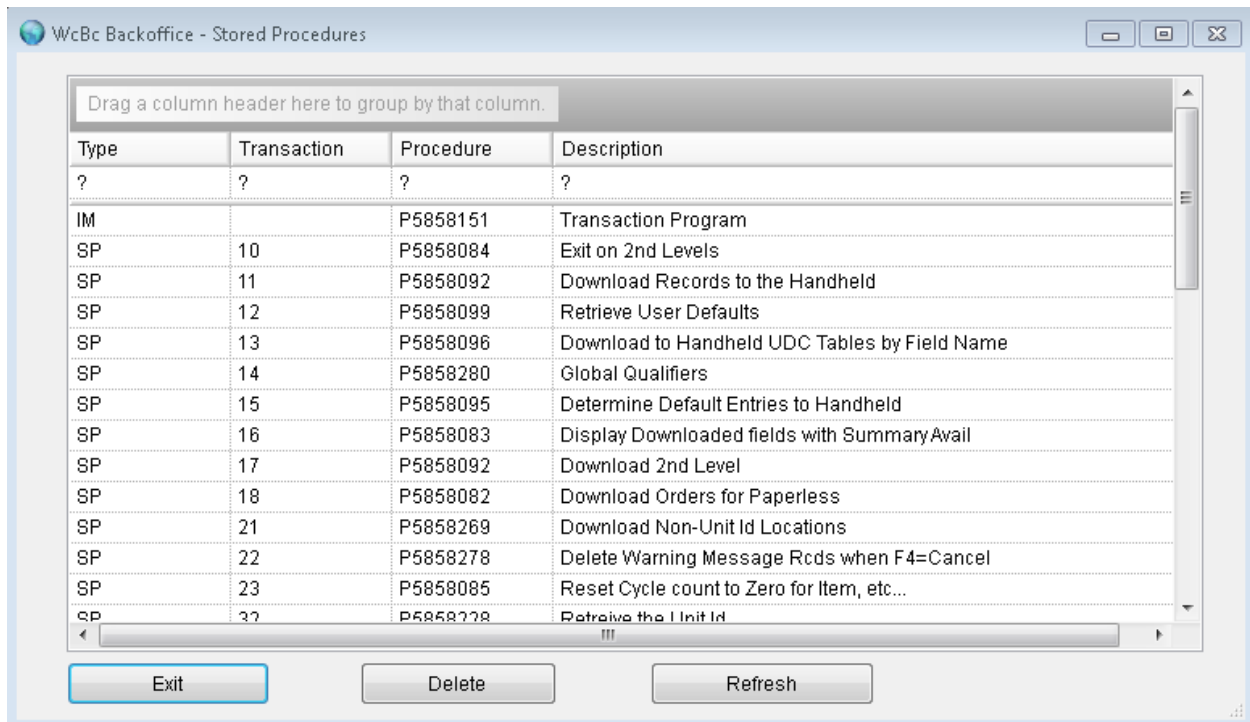
These are the JD Edwards and Current Master Fields/Alias that are currently allowed. These are the Master Fields for each of the Program Ids.

To **Add** a record, Go to the first line where it states "New File" and enter the required fields. You may have to Press Refresh to display on the list.

- **Sequence:** Sequence number for the order of the data elements being prompted for on the handheld for the program Id selected. The Sequence number must be unique.
- **Field Name:** The name of the data element or ALIAS. These are the alias that JD Edwards utilizes in the ERP application. There are custom alias that JD Edwards does not currently have. See appendix of valid fields/alias that are setup in WcBc.
- **Length:** The length of the data element.
- **Decimals:** The number of decimal positions if a numeric field.
- **Field Text :** The XML parameter for the data element. The value will be placed in the merged XML parameter. Example the value entered or defaulted for MCU gets mapped <szBranchPlant>.
- **Alpha/Numeric:** A=Alphanumeric value or N=Numeric value.
- **I/O/D:** The data element I=Input, O=Output, D=Not Used. Inquiry programs offer output data such as "P41026"

- **Program Id:** The Program Id attached to the WcBc barcode transaction.
- **Level:** The level number and should be a 1 for the first level. Some applications such as “P4312” are 2 levels. Level 1 is the entry of the Purchase order number and Level 2 is the Purchase Order details.

STORED PROCEDURES: Maintenance of Stored Procedures.



Type	Transaction	Procedure	Description
?	?	?	?
IM		P5858151	Transaction Program
SP	10	P5858084	Exit on 2nd Levels
SP	11	P5858092	Download Records to the Handheld
SP	12	P5858099	Retrieve User Defaults
SP	13	P5858096	Download to Handheld UDC Tables by Field Name
SP	14	P5858280	Global Qualifiers
SP	15	P5858095	Determine Default Entries to Handheld
SP	16	P5858083	Display Downloaded fields with Summary Avail
SP	17	P5858092	Download 2nd Level
SP	18	P5858082	Download Orders for Paperless
SP	21	P5858269	Download Non-Unit Id Locations
SP	22	P5858278	Delete Warning Message Rcds when F4=Cancel
SP	23	P5858085	Reset Cycle count to Zero for Item, etc...
SP	32	P5858278	Retrieve the Init Id

These are the WcBc Stored Procedures that are currently allowed. These are the Stored Procedures that can be called from the scripting tool for each data element.

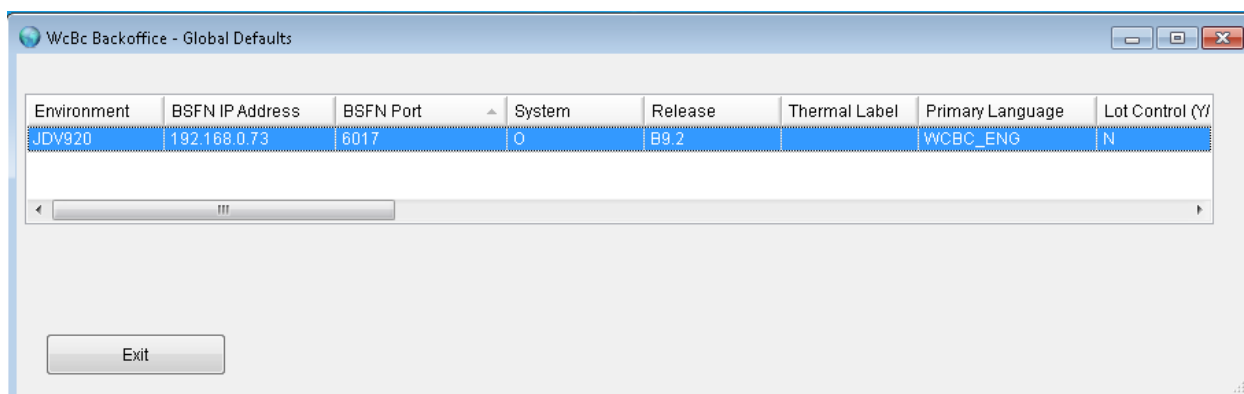
To **Add** a record, Go to the first line where it states “?” and enter the required fields. You may have to Press Refresh to display on the list.

- **Type & Transaction:** This is normally a “SP” if called from the scripting tool. The “IM” is for the “P5858151” driver program and is hardcoded in the handheld/client version. The Type and Transaction must be unique.

- **Procedure:** The executable. These are executables that are in the WcBc folder that can be utilized from the Scripts.

- **Description:** The description of the procedure that is executed.

GLOBAL DEFAULTS: Maintenance of Global Defaults.



These are the WcBc Global variables that link to JD Edwards Primary environment. These are the Global Defaults that control the Environments, BSFN, Languages, and Data Dictionaries in WcBc.

NOTE: Only one record can exist here.

- **Environment:** The Primary environment of JD Edwards. If you are running multiple environments of WcBc on a single PC or Server then the environment tab will override this value.
- **BSFN:** The IP Address of where the BSFN are located and executed. If you are running multiple environments of WcBc on a single PC or Server then the environment tab will override this value.
- **BSFN Port:** The Port that JD Edwards BSFN communicates with. The Default in JD Edwards is 6016, or 6017. If you are running multiple environments of WcBc on a single PC or Server then the environment tab will override this value.
- **System:** The JD Edwards system. O=Enterprise One (Oneworld) or W=World.
- **Release:** The current release of the JD Edwards.
- **Thermal Label:** Interfaced into Thermal printing software.
 - T=TLAshford and Associates
 - B=Bartender
 - L=Loftware
 - Blanks=None
- **Primary Language:** The WcBc Primary language installed.
- **Lot Control (Y/N):** If you are running JD Edwards Lot Control. Y=Yes or N=No.
- **Unit Identification (Y/N):** If you are running JD Edwards Advanced Warehousing. Y=Yes or N=No.
- **Pallet Control (Y/N):** If you are running JD Edwards License Plating (LPN). Y=Yes or N=No.

- **JD Edwards Data Dictionary:** The Number of decimals on each of the alias.

Quantity: Alias **QTYINV**

Amount: Alias **AA**

Cost: Alias **UNCS**

Unit of Measure Conversion: Alias **CONV**

Bill of Materials: Not Used

Unit Price: Alias **UPRC**

Weight: Alias **ITWT**

Volume: Alias **ITVL**

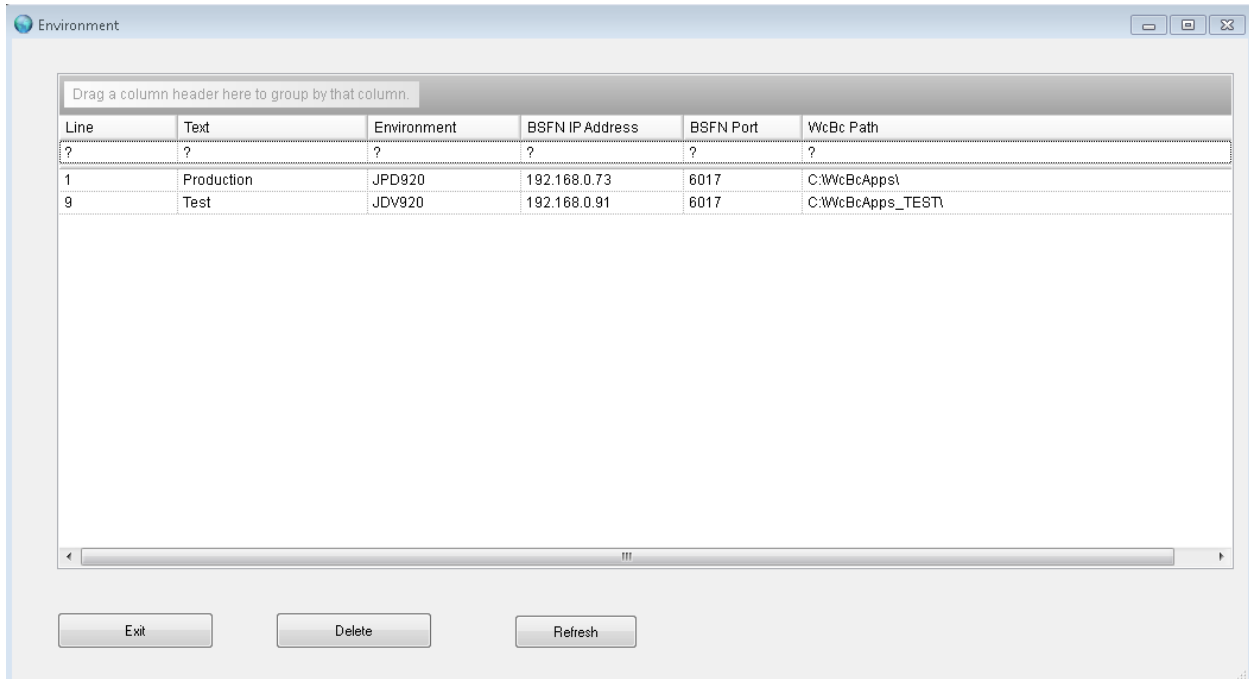
Hours: Alias **CTS1**

Setup: Alias **SETL**

Labor Hours: Alias **RUNL**

Machine Hours: Alias **RUNM**

ENVIRONMENT: Maintenance of the WcBc Environments.



The screenshot shows a window titled "Environment" with a table of data. Above the table is a text box that says "Drag a column header here to group by that column." The table has six columns: Line, Text, Environment, BSFN IP Address, BSFN Port, and WcBc Path. There are three rows of data: a header row with question marks, a row for "Production" (Line 1, Environment JPD920, IP 192.168.0.73, Port 6017, Path C:\WcBcAppst), and a row for "Test" (Line 9, Environment JDV920, IP 192.168.0.91, Port 6017, Path C:\WcBcApps_TEST\). Below the table is a scrollbar and three buttons: Exit, Delete, and Refresh.

Line	Text	Environment	BSFN IP Address	BSFN Port	WcBc Path
?	?	?	?	?	?
1	Production	JPD920	192.168.0.73	6017	C:\WcBcAppst
9	Test	JDV920	192.168.0.91	6017	C:\WcBcApps_TEST\

These are the WcBc Environments that link to the JD Edwards environments. These records also hold the Path where the WcBc executables exist.

To **Add** a record, Go to the first line where it states "?" and enter the required fields. You may have to Press Refresh to display on the list.

- **Line:** The Line that the device is running on. The Line number is used to control the environment setting. Example Line 1 is Production and Line 9 is Test.
- **Text:** The description of the Line. Example Production, Test, CRP.
- **Environment:** The JD Edwards environment.
- **BSFN IP Address:** The IP Address of where the BSFN is located and executed.
- **BSFN Port:** The Port that JD Edwards BSFN communicates with.
- **WcBc Path:** The WcBc path where the executables exist.

QUALIFIERS: Maintenance of Qualifiers for data elements.

WcBc Backoffice - Qualifiers

Drag a column header here to group by that column.

Field Name	Qual 01	Qual 02	Qual 03	Qual 04	Qual 05	Qual 06	Qual 07
?	?	?	?	?	?	?	?

Exit Delete Refresh

These are the Qualifiers that link to the JD Edwards data elements.

To **Add** a record, Go to the first line where it states “?” and enter the required fields. You may have to Press Refresh to display on the list.

- **Field Name:** The field or alias that a qualifier will be added. Example of “LITM” would be a “P” Qualifier in automotive.
- **Qual 01 -10 :** Enter up to 10 Qualifiers for each field/alias..

PROMPT WITH LIST BOX: Maintenance of Defaulted Fields/Alias and the associated drop boxes with selection.

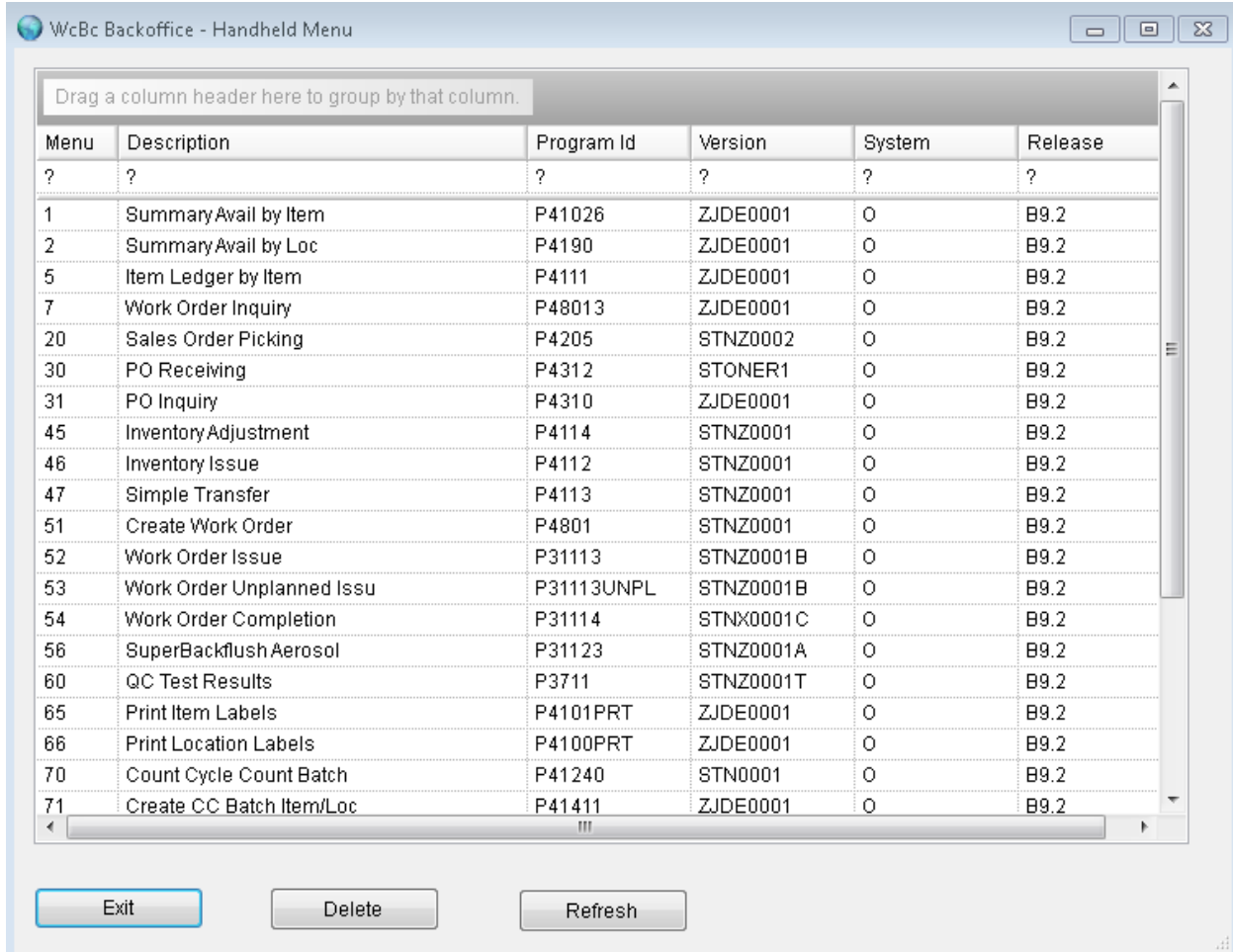
Field Name	Transaction Ty...	Transaction Id	UDC Syst...	UDC Co...	Text Start Posi...	Text Length	Selection Start Po...	Selection Len...
?	?	?	?	?	0	0	0	0
FMCU	SP	89			1	12	1	12
MCU	SP	89			1	12	1	12
RCD	SP	13	42	RC	1	20	21	3
RSN	SP	13	42	RC	1	20	21	3
TMCU	SP	89			1	12	1	12

These are the Prompt with List Box that link to the JD Edwards data elements. These are just defaults and can be override from the Scripting tool.

To **Add** a record, Go to the first line where it states “?” and enter the required fields. You may have to Press Refresh to display on the list.

- **Field Name:** The field/alias that a list box is being added to.
- **Transaction Type & Id:** The transaction type and Id. This determines which stored procedure is executed. Example of SP/13 will execute a listing of UDC Tables for 42/RC.
- **UDC System & Code:** The JD Edwards UDC table to display.
- **Text Start Position:** The position where the text starts in the list box.
- **Text Length:** The length of the text being displayed in the list box.
- **Selection Start Position:** The position where you want the text to start in the list box.
- **Selection Length:** The length of the data being displayed in the list box.

HANDHELD MENUS: Maintenance of WcBc Handheld Menu's.



Drag a column header here to group by that column.

Menu	Description	Program Id	Version	System	Release
?	?	?	?	?	?
1	Summary Avail by Item	P41026	ZJDE0001	O	B9.2
2	Summary Avail by Loc	P4190	ZJDE0001	O	B9.2
5	Item Ledger by Item	P4111	ZJDE0001	O	B9.2
7	Work Order Inquiry	P48013	ZJDE0001	O	B9.2
20	Sales Order Picking	P4205	STNZ0002	O	B9.2
30	PO Receiving	P4312	STONER1	O	B9.2
31	PO Inquiry	P4310	ZJDE0001	O	B9.2
45	Inventory Adjustment	P4114	STNZ0001	O	B9.2
46	Inventory Issue	P4112	STNZ0001	O	B9.2
47	Simple Transfer	P4113	STNZ0001	O	B9.2
51	Create Work Order	P4801	STNZ0001	O	B9.2
52	Work Order Issue	P31113	STNZ0001B	O	B9.2
53	Work Order Unplanned Issu	P31113UNPL	STNZ0001B	O	B9.2
54	Work Order Completion	P31114	STNX0001C	O	B9.2
56	SuperBackflush Aerosol	P31123	STNZ0001A	O	B9.2
60	QC Test Results	P3711	STNZ0001T	O	B9.2
65	Print Item Labels	P4101PRT	ZJDE0001	O	B9.2
66	Print Location Labels	P4100PRT	ZJDE0001	O	B9.2
70	Count Cycle Count Batch	P41240	STN0001	O	B9.2
71	Create CC Batch Item/Loc	P41411	ZJDE0001	O	B9.2

Exit Delete Refresh

These are the Handheld Menus that will display on the handheld/client and then executed in the JD Edwards BSN or custom application.

To **Add** a record, Go to the first line where it states “?” and enter the required fields. You may have to Press Refresh to display on the list.

- **Menu:** The menu option to be displayed on the handheld/client. The Menu option must be unique.
- **Description:** The name of the menu option you see displayed on the handheld/client.
- **Program Id:** The Program Id the menu option executes when selected. Example of “P4113” to process an Inventory Transfer.
- **Version:** The JD Edwards version that is being executed.
- **System:** JD Edwards System. O=EnterpriseOne (Oneworld) or W=World.
- **Release:** The JD Edwards version.

PROCESSING OPTIONS: Maintenance of WcBc/JD Edwards versions for the Program Id.

WcBc Backoffice - Processing Option Details

Select Program Id: P4112 Select Version: STNZ0001

Seq	Sub	Description	Answer
1	1	JD Edwards Business Function (BSFN)	
2	1	* User Id:	ClientUser
3	1	* Password:	
3	2		
4	1	* BSFN (F4114BeginDocument) for XMLCALLOBJ	F4112Begin
5	1	* (F4114EditLine)	F4112Edit
6	1	* (F4114EndDocument)	F4112End
7	1	* (F4114ClearDetailStack)	F4112Clear
7	2		
8	1	* Process XMLCALLOBJ at selected times	1
8	2	* 1=Run all BSFN during Transaction	
8	3		
9	3	Processing Options	
10	1	Enter document type? This is required.	II
10	2	szDocumentType">	
10	3	The document type must be entered and cannot be blanks.	
10	4		

Exit Refresh Header System 0 Release B9.2

These are the Processing Options/Parameters that are executed from each Menu Option. These questions are driven by the Authorized Processing Options for the Program Id.

To create a New version, click on the Header button. You will be able to manually create a new version, or use the copy function to create the version.

- **Sequence:** The Sequence number. The sequence unless tied to a XML parameter must be tied in the application.
- **Sub Sequence:** The Sub Sequence number. Answers to questions can only be done in Sub Sequence number 1.
- **Description:** The Description of the Question.
- **Answer:** The Answers feed into the WcBc application and JD Edwards BSFN. Example for the question of Enter Document Type the "II" is merged XML parameter "szDocumentType".

Note: The answer of "ClientUser" in the question of User Id & Password states that the JD Edwards Transaction is recorded with user that signed on to the handheld/client.

SCRIPTS: Maintenance for Scripting Tool for each menu option.

WcBc Backoffice - Scripts

Select Menu: 46 Description: Inventory Issue Program Id: P4112 Version: STNZ0001

Script Type: ☒ Input ☐ Output Download Application: N

Drag a column header here to group by that column.

Sequence	Field Name	Default Text	Prompting Text	Length	Decimals	Field Type	Edit Entry	Field Format	Default
1	LITM	<szItemNumber> ...	Item Number	25	0	A	R		
4	QTY	<mnTransactionQty> ...	Quantity to Issue	15	4	N	R	RZ	
2	LOCN	<szDisplayedLocation> ...	Location	20	0	A	R		
	MCU	<szBranchPlant> ...		12	0	A			
3	UOM	<szTransactionUOM> ...	U/M...	2	0	A			LITM_U
	LOTN	<szLotNumber> ...		30	0	A			
	RCD	<szReasonCode> ...		3	0	A			
	LPN	<szFromLicensePlate> ...		20	0	A			
	SBL	<szSubledger> ...		8	0	A			
	SBLT	<szSubledgerType> ...		1	0	A			
	NLBL	Number of Labels? ...		3	0	N			
	ANI	<szAccountNumber> ...		29	0	A			

Exit Delete Refresh Script Override

These are the Prompting Sequences/Scripts that will display on the handheld/client.

These Fields/Alias are driven by the Authorized Master Fields for the Program Id.

- **Sequence:** The Prompting Sequence on the client. Example 1 on Field/Alias LITM would mean the client will prompt for the Item number first. To remove a field/alias from being prompted click on the line to remove and click the Delete button.
- **Field Name:** The Field/Alias name of the data element. See appendix of valid fields/alias.
- **Default Text:** The value of the Field/Alias will map into the merged XML parameter.
- **Prompting Text:** The text that will display on the handheld/client.
- **Length:** The length of the data element.
- **Decimals:** The number of decimal positions.
- **Field Type:** A=Alphanumeric or N=Numeric.

- **Edit Entry:** If the data element should have preliminary edit checks.
 Blanks=Not Required.
 R=Required Entry do not allow blanks.
 V=Validate against what was downloaded from the 2nd Level.
 S=Force Scan of data element.
 T=Force Scan and validate against what was downloaded from the 2nd Level.
- **Field Format:** The format the data element should be displayed.
 RB=Right Adjust blank fill. Use for field/alias MCU.
 RZ=Right Adjust Zeros fill. For Field type of "N" Only. If this is a Numeric field then Backoffice will auto load "RZ".
- **Default Entry:** The data element will be defaulted with the entry. So you default many different variables from the Item master and/or Item Branch plant. Example LITM_UOM1 would default the Primary Unit of Measure.
- **Display Default Entry (Y/N):** Display the Defaulted entry on the client. Y=Yes or N=No. A "Y" would display the defaulted entry on the client and could be changed, or a "N" to default the defaulted entry but does not display as a prompt.
- **Transaction Type & Id:** The stored procedure to execute and display a list of information. Example would be SP/16 to display summary availability information based on the item number.
- **UDC System & Code:** If the Transaction Type & Id is equal to SP/13 then you can display a reason code list. Example would be to display a list of reason codes for 42/RC and allow for selection.
- **Text Start Position:** The position that the text starts on the handheld.
- **Text Length:** The length of the text.
- **Selection Start:** Starting position of the selection.
- **Selection Length:** The length of the selection.
- **Function Key:** The function key codes that are allowed. See appendix at the end of the manual.
- **Screen Display:** Determines which screen is displayed on the client. See appendix at the end of the manual.
- **Level:** The level number must be a "1" or "2".

THERMAL LABELS: Maintenance of Thermal Labels.

WcBc Backoffice - Thermal Labels

Select Menu: 47 Description: Simple Transfer Program Id: P4113

Drag a column header here to group by that column.

Seq	Format Name	Branch Plant	Address Book	Description	Output Queue	Print Type	Override	Unit Id Type
0	?	?	0	?	?	?	?	?
1	RECWCBC	10100000	0	Test	P1	DO01		

Exit Delete Refresh

These are the Thermal Labels that will print during a transaction acceptance.

To **Add** a record, Go to the first line where it states “?” and enter the required fields. You may have to Press Refresh to display on the list.

- **Sequence:** The sequence in which the thermal label will print. The sequence must be unique.
- **Format Name:** The name of the label format that prints. These names are generated from TLAshford, Loftware, or Bartender.
- **Branch Plant:** If entered, the Branch Plant will print and it must match the Branch Plant of the Transaction.
- **Address Book:** If entered, the Address Book that will print and it must match the Address Book of the Transaction. This is for specific Customer Labels.
- **Description:** The description of the label format.
- **Output Queue:** The default printer that the label will print on.
- **Print Type:** The type of label that prints.

Type HP01: Header Label with prompt on the # of labels.

Type DP01: Detail Label with prompt on the # of Labels.

Type DS01: Container Label.

Type HT01: Header Label with # of Labels which is determined by the Transaction Qty.
Type HT02: Header Label with # of Labels which is determined by the Transaction Qty.
Type HT03: Header Label with # of Labels which is determined by the Transaction Qty.
Type HT04: Header Label with # of Labels which is determined by the Transaction Qty.
Type DO01: Detail Label with # of Labels comes from the value of 1.
Type DT01: Detail Label with # of Labels which is determined by the Transaction Qty.

- **Override:** Each user can override their default printer. . For example a user might use a Portable Print for specific labels but also use a Desktop printer. The override here would match the override from the User. Example a 1 or 2.

- **Unit Id Type:** Type of unit Id being printed. Not used at this time.

- **Program Name:** The Program that runs to print the thermal label. For TLashford this is the Program "Z4XI1024" name to utilize. For Bartender or Loftware you can enter "Bartend" or "Loftware".

- **Menu:** The menu option that prints the thermal label.

ROLES: Maintenance of JD Edwards Roles to Menu Options.

WcBc Backoffice - Roles

Drag a column header here to group by that column.

Menu	Description	Role 01	Role 02	Role 03	Role 04	Role 05	Role 06	Role
1	Summary Avail by Item	IT_MASTER	0_INQUIRY	INV_SUPER	NO ROLE	NO ROLE	NO ROLE	NO R
2	Summary Avail by Loc	IT_MASTER	0_INQUIRY	INV_SUPER	NO ROLE	NO ROLE	NO ROLE	NO R
5	Item Ledger by Item	IT_MASTER	0_INQUIRY	INV_SUPER	NO ROLE	NO ROLE	NO ROLE	NO R
7	Work Order Inquiry	IT_MASTER	0_INQUIRY	INV_SUPER				
20	Sales Order Picking	IT_MASTER	0_INQUIRY	INV_SUPER				
30	PO Receiving	IT_MASTER	0_INQUIRY	INV_SUPER				
31	PO Inquiry	IT_MASTER	0_INQUIRY	INV_SUPER				
45	Inventory Adjustment	IT_MASTER	0_INQUIRY	INV_SUPER				
46	Inventory Issue	IT_MASTER	0_INQUIRY	INV_SUPER				
47	Simple Transfer	IT_MASTER	0_INQUIRY	INV_SUPER				
51	Create Work Order	IT_MASTER	0_INQUIRY	INV_SUPER				
52	Work Order Issue	IT_MASTER	0_INQUIRY	INV_SUPER				

Exit Refresh

Each Menu Option that has been created you can determine which JD Edwards Roles will execute the option. If the User that signs on to the handheld/client has the JD Edwards Role that is assigned to the Menu Option then the user will be able to run that option.

- **Menu:** The WcBc Menu option and text of the Handheld menu.
- **Role 1 -20:** Enter up to 20 different Roles that are assigned to the Menu Option.

CREATE XML DOCUMENT: Maintenance of JD Edwards BSFN into WcBc members.

Member	Sequence	XML
F4114Begin	10	<?xml version="1.0" encoding="UTF-8"?>
F4114Begin	20	<jdeRequest comment="" environment="" pwd="" role="**ALL" session="" sessionid="" type="callmethod"...
F4114Begin	30	<callMethod app="WcBc" name="F4114BeginDocument">
F4114Begin	40	<returnCode code="0" />
F4114Begin	50	<params>
F4114Begin	60	<param name="cDocumentAction">
F4114Begin	80	<param name="szComputerID">
F4114Begin	100	<param name="cErrorConditions">
F4114Begin	120	<param name="szBranchPlant">
F4114Begin	140	<param name="mnBatchNumber">0
F4114Begin	150	<param name="jdBatchDate">
F4114Begin	170	<param name="mnLastJELLineNumber">0
F4114Begin	180	<param name="szDocumentKeyCompany">
F4114Begin	200	<param name="szDocumentType">
F4114Begin	220	<param name="mnDocumentNumber">0
F4114Begin	230	<param name="idGLDate">

This Menu Option will pull into WcBc the JD Edwards BSFN. WcBc will place the BSFN into a Member. Business functions uses the XMLCALLOBJ defined in the JD Edwards Interoperability guidelines. Once pulled into WcBc then we can execute these BSFN from adding the member name to the Processing Option for the version.

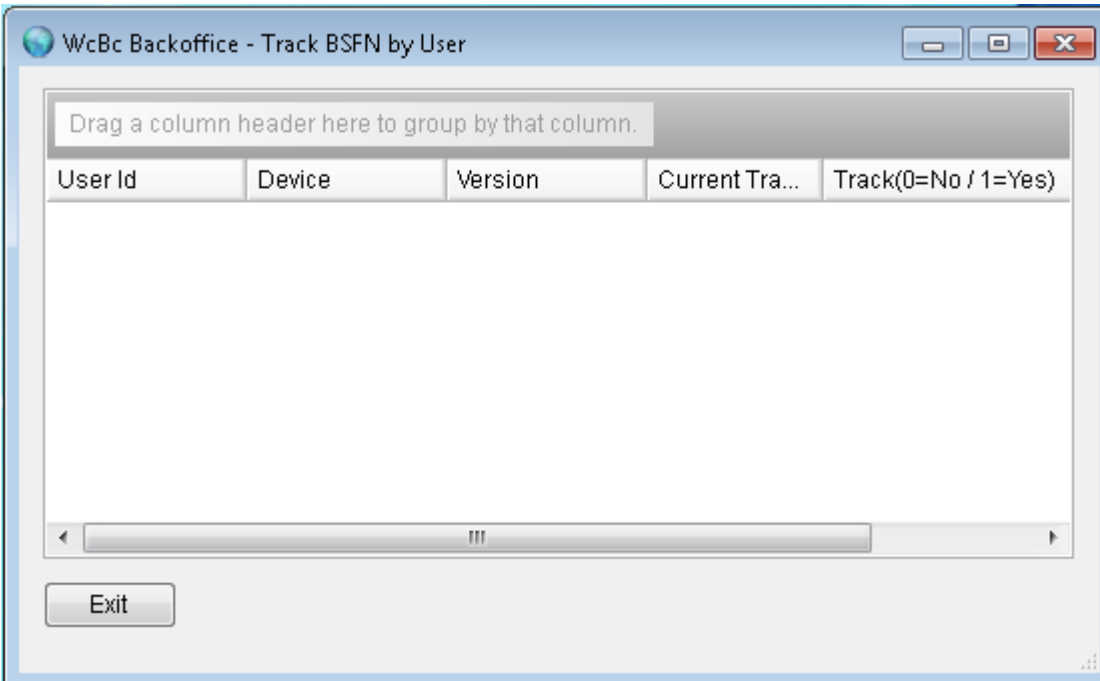
BSFN: Enter the JD Edwards BSFN name. These BSFN are defined in JD Edwards.

Member: The WcBc Member name. These Member names cannot exceed 10 positions and are entered in the Processing Option/Parameters for execution.

Clear: Press the Clear button to clear the existing Member. This should be done prior to pulling in the BSFN.

User & Password: Enter the JD Edwards User and Password that has authority to bring in the BSFN.

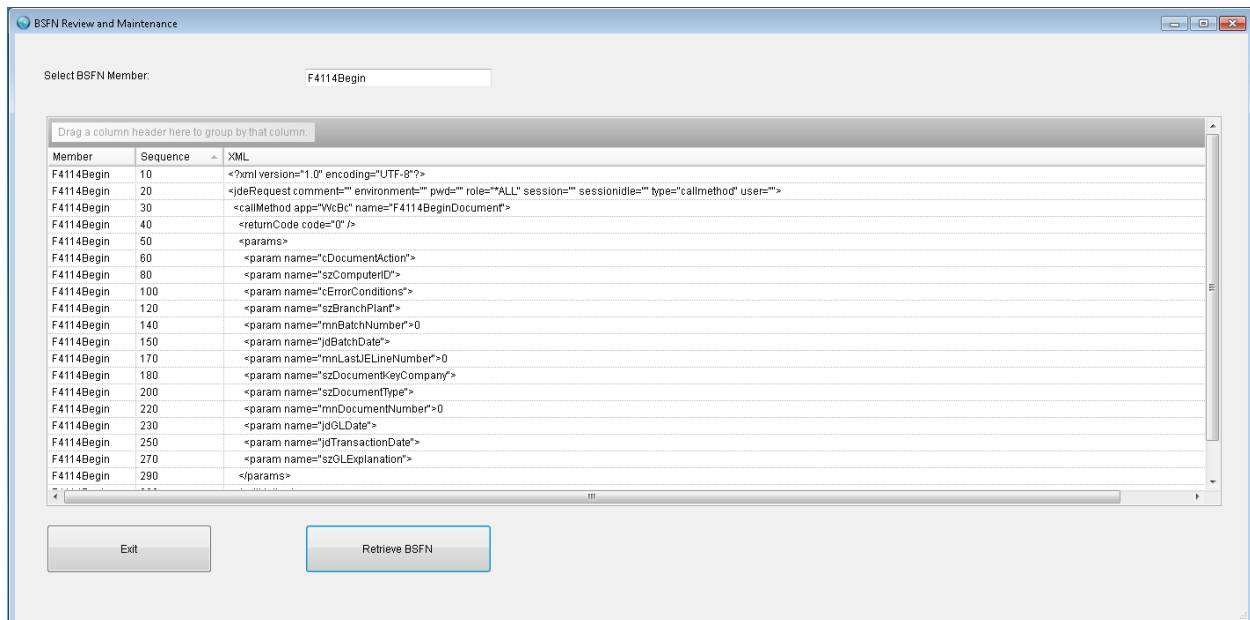
TRACK USER: This will create an audit trail of BSFN for the Handheld/Client Port and User Id.



This Menu Option will create an audit trail of BSFN in the folder called Track in the executables path. This will create XML documents for each of the "XMLCALLOBJ" BSFN. You can open the Merged XML document through NotePad.

Track (0=No / 1=Yes): Enter a "1" to track the client/user BSFN. This will be turned off when the user signs back on to the handheld/client.

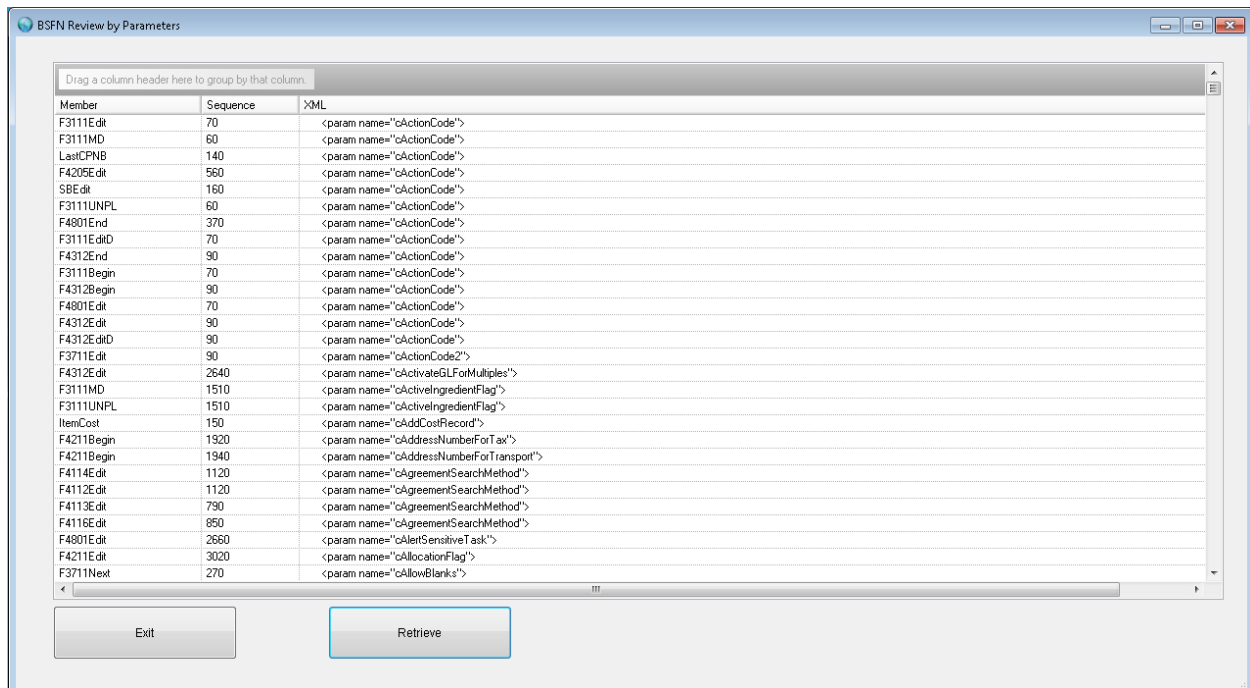
BSFN REVIEW: Display BSFN once it been pulled into WcBc.



This is used as a development tool so we can copy and paste the XML parameters into the Authorized Processing Options.

Member: The WcBc Member name. These Member names cannot exceed 10 positions and are entered in the Processing Option/Parameters. After the Member name is entered you can press the Retrieve button to display.

BSFN REVIEW BY PARAMETER: Display ALL the BSFN once it been pulled into WcBc.



BSFN Review by Parameters

Drag a column header here to group by that column.

Member	Sequence	XML
F3111Edt	70	<param name="cActionCode">
F3111MD	60	<param name="cActionCode">
LastCPNB	140	<param name="cActionCode">
F4205Edt	560	<param name="cActionCode">
SBE dt	160	<param name="cActionCode">
F3111UNPL	60	<param name="cActionCode">
F4801End	370	<param name="cActionCode">
F3111EdtD	70	<param name="cActionCode">
F4312End	90	<param name="cActionCode">
F3111Begin	70	<param name="cActionCode">
F4312Begin	90	<param name="cActionCode">
F4801Edt	70	<param name="cActionCode">
F4312Edt	90	<param name="cActionCode">
F4312EdtD	90	<param name="cActionCode">
F3711Edt	90	<param name="cActionCode2">
F4312Edt	2640	<param name="cActivateGLForMultiples">
F3111MD	1510	<param name="cActiveIngredientFlag">
F3111UNPL	1510	<param name="cActiveIngredientFlag">
ItemCost	150	<param name="cAddCostRecord">
F4211Begin	1920	<param name="cAddressNumberForTax">
F4211Begin	1940	<param name="cAddressNumberForTransport">
F4114Edt	1120	<param name="cAgreementSearchMethod">
F4112Edt	1120	<param name="cAgreementSearchMethod">
F4113Edt	790	<param name="cAgreementSearchMethod">
F4116Edt	850	<param name="cAgreementSearchMethod">
F4801Edt	2660	<param name="cAlertSensitiveTask">
F4211Edt	3020	<param name="cAllocationFlag">
F3711Next	270	<param name="cAllowBlanks">

Exit Retrieve

To see a specific XML parameter you can Drag the XML line to sort. This way you can view all the XML that uses the same parameter. You can Press the Retrieve button to display the XML document.

This is used as a development tool so we can copy and paste the XML parameters into the Authorized Processing Options.

DEVICE CONFIGURATIONS: Maintenance of Handheld Devices.

Line	Port	Port 2 (Not Us...	Address	Type	Model	Department	Device Name
							?
1	m		A	R	CE.NET	Unknown	4101
1	m		B	R	CE.NET	Unknown	4102
1	m		C	R	CE.NET	Unknown	4103
1	m		D	R	CE.NET	Unknown	4104
1	m		E	R	CE.NET	Unknown	4105
1	m		F	R	CE.NET	Unknown	4106
1	m		G	R	WIN	Virtual PC	4107
1	m		H	R	CE.NET	Unknown	4108
1	m		I	R	CE.NET	Unknown	4109
1	m		J	R	CE.NET	Unknown	4110
1	m		K	R	CE.NET	Unknown	4111
1	m		L	R	CE.NET	Unknown	4112
1	m		M	R	CE.NET	Unknown	4113

These are the Devices that are setup in WcBc. These are known as clients or devices.

To **Add** a record, Go to the top blank line and enter the required fields. You may have to Press Refresh to display on the list

Line: Enter the Line number. The Line number determines which environment of JD Edwards to execute. This is visible in the environment tab.

Port: The WcBc currently uses a lower case character. Usually a m, n, o, etc..

Port 2: Not currently used.

Address: Enter the Address letter. This can be from A-Z. The combination of Line, Port and Address must be unique.

Type: Enter a "R" for Reader.

Model: Enter the OS of the Handheld/Client.

WIN: Windows PC.

CE.NET: Windows CE.

WM.NET: Windows Mobile.

IOT: Windows IoT.

IOS: iPhone, iPad.

Droid: Android.

Department: Enter the Department number where the device resides.

Device Name: Enter the port number. This number must also be unique.

PERIPHERAL DEVICES: Maintenance of Peripheral devices such as Scales or Reading gauges.

Branch Plant	Peripheral Name	Port	Baud Rate	Parity	Data B
?	?	?	?	?	?
M30	SCALE1				

These are the Devices that are setup in WcBc that data can be pulled into the application.

To **Add** a record, Go to the “?” and enter the required fields. You may have to Press Refresh to display on the list.

Branch Plant: The Peripheral device is associated to a given Branch Plant. The same Peripheral device can be assigned to multiple Branch Plants.

Peripheral Name: The name that is assigned to the device.

Port & Baud Rate, Parity, Data Bits, Stop Bits: The legacy ways of communication between a RS-232 Port and cable to a PC com port.

Broadcast IP Address & Port: The Networked Peripheral device can post readings using this IP Address and Port. The WcBc application can open a socket to this IP Address & Port and pull in its readings.

LANGUAGES: Maintenance of WcBc Languages.

Language Id	Text	Selection	Sequence	Library	Decimal Sep	Thousand Sep	IBM CCSID
?	?	?	0	?	?	?	?
English	English	1)English	1	WCBC_ENG	.	,	00037
Italiano	Italiano	3)Italiano	3	WCBC_ITA	.	,	00280
Polish	Polish	5)Polish	5	WCBC_POL	.	,	00870
Spanish	Español	4)Español	4	WCBC_ESP	.	,	00284
Chinese	Chinese	2)Chinese	2	WCBC_CHI	.	,	99999

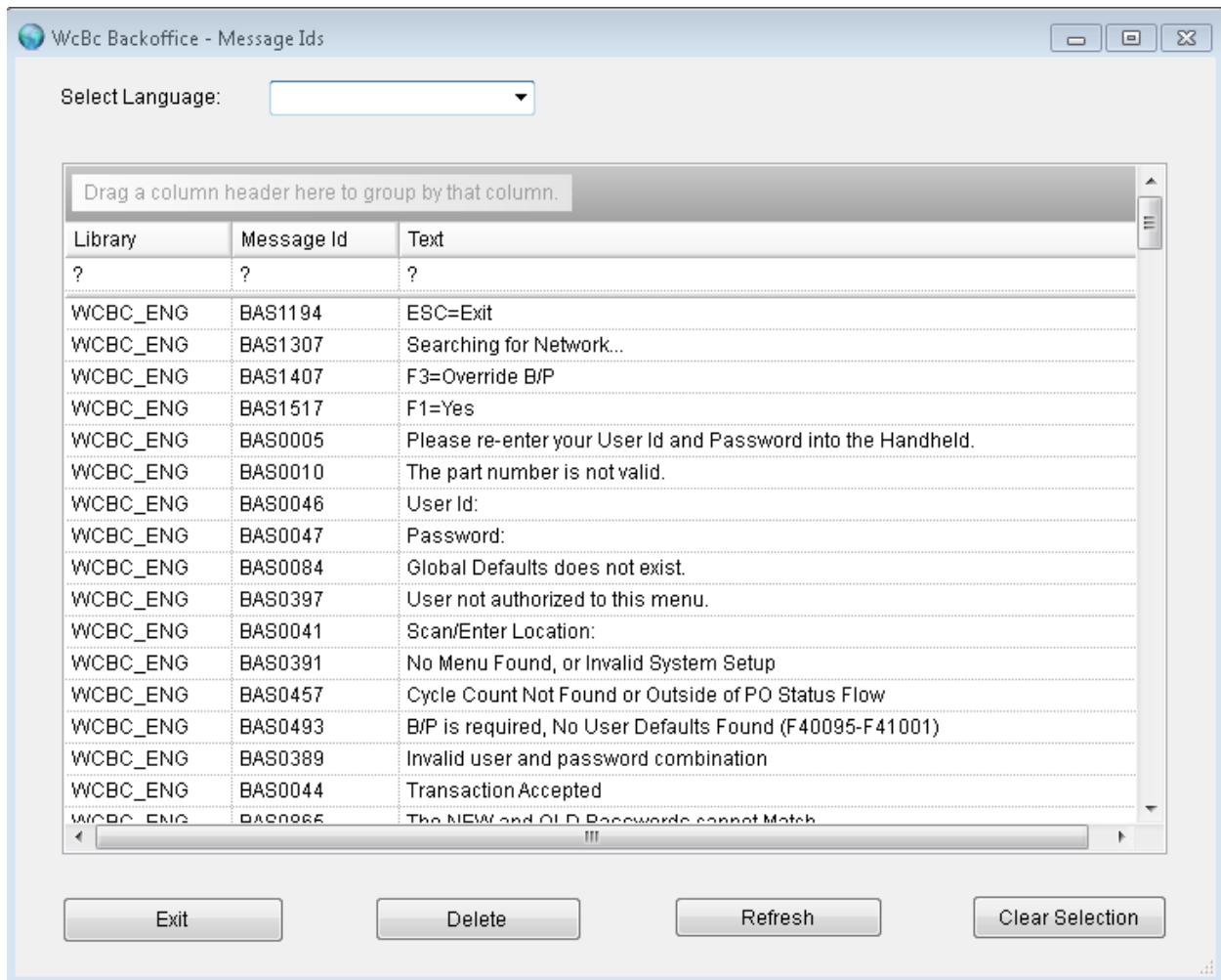
Exit Delete Refresh

These are the Languages that are setup in WcBc.

To **Add** a record, Go to the “?” and enter the required fields. You may have to Press Refresh to display on the list

- **Language Id:** The languages that are available to the end user.
- **Text:** The text of the language.
- **Selection:** The order of language selection.
- **Sequence:** The sequence of the selected languages. This is the numeric value of the selection.
- **Library:** The Language Identifier where the Message Id is stored.
- **Decimal Separator:** The decimal separator that is used for the given language.
- **Thousand Separator:** The thousand separator that is used for the given language.
- **IBM CCSID:** Not used at this time.
- **Date Format:** The date format for the given language.
- **Date Separator:** The date separator for the given language.

MESSAGE IDS: Maintenance of Message Ids.



Select Language:

Drag a column header here to group by that column.

Library	Message Id	Text
?	?	?
WCBC_ENG	BAS1194	ESC=Exit
WCBC_ENG	BAS1307	Searching for Network...
WCBC_ENG	BAS1407	F3=Override B/P
WCBC_ENG	BAS1517	F1=Yes
WCBC_ENG	BAS0005	Please re-enter your User Id and Password into the Handheld.
WCBC_ENG	BAS0010	The part number is not valid.
WCBC_ENG	BAS0046	User Id:
WCBC_ENG	BAS0047	Password:
WCBC_ENG	BAS0084	Global Defaults does not exist.
WCBC_ENG	BAS0397	User not authorized to this menu.
WCBC_ENG	BAS0041	Scan/Enter Location:
WCBC_ENG	BAS0391	No Menu Found, or Invalid System Setup
WCBC_ENG	BAS0457	Cycle Count Not Found or Outside of PO Status Flow
WCBC_ENG	BAS0493	B/P is required, No User Defaults Found (F40095-F41001)
WCBC_ENG	BAS0389	Invalid user and password combination
WCBC_ENG	BAS0044	Transaction Accepted
WCBC_ENG	BAS0066	The NEW and OLD Passwords cannot Match

Exit Delete Refresh Clear Selection

These are the Message Id's that are setup in WcBc.

To **Add** a record, Go to the "?" and enter the required fields. You may have to Press Refresh to display on the list.

- **Library:** The Language library that the message Id is stored.
- **Message Id:** The Id that is given to a message. The Library and Message Id must be unique.
- **Text:** The text of the message Id.

LITERALS: Maintenance of Non-Primary Prompting Sequences.

Drag a column header here to group by that column.

Menu	I/O/D	Field Na...	Text 01	Text 02	Text 03	Text 04	Text 05
1			Summary Avail by Item	按物料提供的摘要	Riepilogo disponibile per	Resumen disponible p...	Podsumowanie dostęp
1	I	LITM	Item Number:	物料編號	Numero	Número de artículo	Numer przedmiotu
1	I	MCU	Branch Plant				
1	O	HCOM	Hard Commit:				
1	O	LITM	Item.....:				
1	O	MCU	B/P.....:				
1	O	PBCK	Qty Backorder:				
2			Summary Avail by Loc				
7			Work Order Inquiry				
7	O	SOSN	Scrapped.:				
20			Sales Order Picking				
47	I	LITM	Item number:				
47	I	TREX	Thiru				
54	I	LITM	Item Number				
56	I	LITM	Item number				
56	I	LOCN	Location				
56	I	OPSQ	Operation Seq				
56	I	SOQS	Qty Completed				
56	I	SOSN	Qty Scrapped				
56	I	UOM	Unit of Measure				
60	I	QVAL	Results				
65			Print Item Labels				
65	I	LBLS	Number of Labels				

Exit Refresh

These are the Literals for each of the Languages. These records are auto created when a Prompting Sequence/Script is selected or a New Menu Option is created.

- **Menu:** The WcBc Menu option. These are the Menu created in the Handheld Menus.
- **I/O/D:** Is the data element I=Input, O=Output, D=Not Used.
- **Field Name:** The field or alias that the text will be displayed. Example of "LITM" would that "Item Number" as the prompt. Example if the User Language is Chinese then 物料编号 would be displayed.

You can have up to 8 Text Fields in different languages for each field/alias or Menu Option Text.

- **Text 01 – 08.** Enter the text for each of the languages.

USER LISTING: View WcBc User Ids.

User Listing

Drag a column header here to group by that column.

User Id	Password	Name	Thermal Print...	Hardcopy Prin...	Thermal Print...	Language	Preferences	Shift	Address Book
BGEARHART	*****	BGEARHART				English			3709
BHOUCK	*****	BHOUCK				English			3116
CREECK	*****	CREECK				English			3136
DSCRANTON	*****	DSCRANTON				English			3122
DSHELLENBE	*****	DSHELLENBE				English			3545
DZIPP	*****	DZIPP				English			3560
EUMBERHOCK	*****	EUMBERHOCK				English			3402
FCHAMBERS	*****	FCHAMBERS				English			3534
FR1	*****	FR1				English			0
FR2	*****	FR2				English			0
FR3	*****	FR3				English			0
FR4	*****	FR4				English			0
FR5	*****	FR5				English			0
GBOOK	*****	GBOOK				English			3113
GHART	*****	GHART				English			3511
GPAUL	*****	GPAUL				English			3711
JDEAROLF	*****	JDEAROLF				English			3539
JGOLDBACH	*****	JGOLDBACH				English			3112
JKING	*****	JKING				English			3111

Exit Refresh Execute Role Interface

These Users are created when the Execute Role Interface is clicked. Any User that has any Roles assigned to Menu Options will be created.

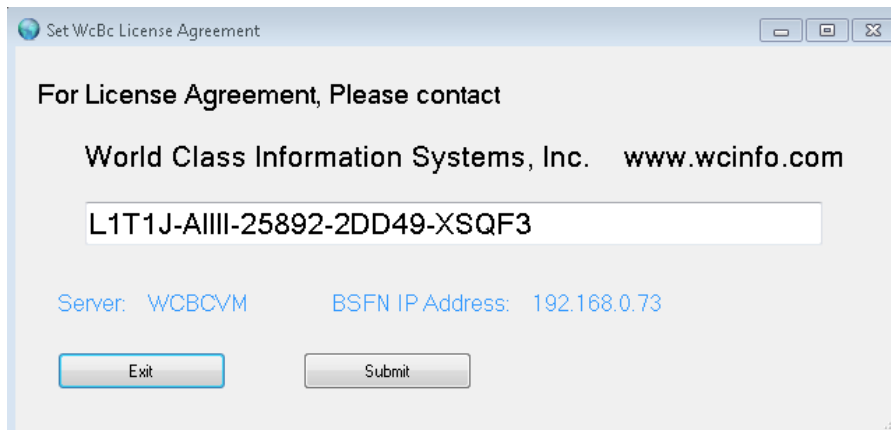
- **User Id:** The WcBc and JD Edwards User Id that is used to sign on to WcBc.
- **Password:** The WcBc Password that is attached to the User Id that is used to sign on to WcBc. If you are going to use the same Password as JD Edwards then this will have an * so there is no visibility.
- **Name:** The Name of the person. Currently we do not interface from JD Edwards so this is the same as the User Id.
- **Thermal Printer Override 01:** The printer where the thermal labels print.
- **Hardcopy Printer:** The printer where the laser hardcopies will print.
- **Thermal Printer Override 02:** The printer where the thermal labels print.
- **Language:** The language that the user id is linked.
- **Preferences:** The Preferences for the User Id. This field is not currently used and can be used by owners.
- **Shift:** The Users Shift. This can be maintained from the handheld/client.
- **Address Book:** The JD Edwards address book the User id.

BACKFLUSH ERRORS: View any JD Edwards Backflush Errors.

Backflush Errors									
Drag a column header here to group by that column.									
Work Order	Branch Plant	Short Item	2nd Item Num...	Location	Lot Number	Backflush Quantity	Transaction Date	Transaction Time	Unique Id
151172	10100000	14769	CHMA91034X...	MIXINGROOM		11.1200	2018/05/31	101408	2757712
151172	10100000	15121	PACA1220PXX...	GFFLOOR		2.0800	2018/05/31	101408	2757724
151172	10100000	14769	CHMA91034X...	MIXINGROOM		5.5600	2018/05/31	93121	2757712
151172	10100000	15121	PACA1220PXX...	GFFLOOR		1.0400	2018/05/31	93121	2757724
151172	10100000	14769	CHMA91034X...	MIXINGROOM		5.5600	2018/05/21	74452	2757712
151172	10100000	15121	PACA1220PXX...	GFFLOOR		1.0400	2018/05/21	74452	2757724
151172	10100000	14769	CHMA91034X...	MIXINGROOM		11.1200	2018/05/10	154512	2757712
151172	10100000	15121	PACA1220PXX...	GFFLOOR		2.0800	2018/05/10	154512	2757724
151172	10100000	14769	CHMA91034X...	MIXINGROOM		11.1200	2018/05/10	143231	2757712
151172	10100000	15121	PACA1220PXX...	GFFLOOR		2.0800	2018/05/10	143231	2757724
151172	10100000	14769	CHMA91034X...	MIXINGROOM		11.1200	2018/05/08	123129	2757712
151172	10100000	15121	PACA1220PXX...	GFFLOOR		2.0800	2018/05/08	123129	2757724
151172	10100000	14769	CHMA91034X...	MIXINGROOM		5.5600	2018/05/08	72040	2757712
151172	10100000	15121	PACA1220PXX...	GFFLOOR		1.0400	2018/05/08	72040	2757724
151172	10100000	14769	CHMA91034X...	MIXINGROOM		5.5600	2018/05/08	71615	2757712
151172	10100000	15121	PACA1220PXX...	GFFLOOR		1.0400	2018/05/08	71615	2757724
151172	10100000	14769	CHMA91034X...	MIXINGROOM		5.5600	2018/05/07	133446	2757712
151172	10100000	15121	PACA1220PXX...	GFFLOOR		1.0400	2018/05/07	133446	2757724
151172	10100000	14769	CHMA91034X...	MIXINGROOM		5.5600	2018/05/07	122044	2757712

When a Super-Backflush or Work Order completion is processed and if an error exist for any reason on the Backflush Work Order issue then the error gets created in this table.

LICENSES: Set and Display the WcBc License.



Set WcBc License Agreement

For License Agreement, Please contact

World Class Information Systems, Inc. www.wcinfo.com

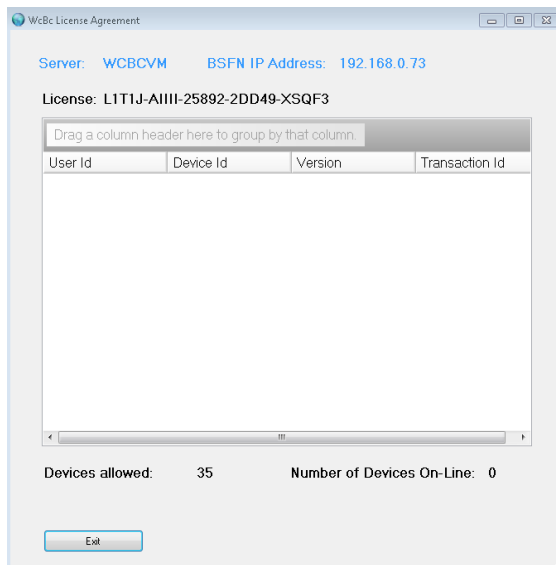
L1T1J-AIIII-25892-2DD49-XSQF3

Server: WCBVCVM BSFN IP Address: 192.168.0.73

Exit Submit

The License is granted for the PC or Server that WcBc executes on. The WcBc License is purchased by a Corporation based on the Number of handheld/clients.

To Display your License.



WcBc License Agreement

Server: WCBVCVM BSFN IP Address: 192.168.0.73

License: L1T1J-AIIII-25892-2DD49-XSQF3

User Id	Device Id	Version	Transaction Id
---------	-----------	---------	----------------

Devices allowed: 35 Number of Devices On-Line: 0

Exit

HOW TO CREATE A NEW OPTION: Example on how to create a New Menu Option.

This is a Step by Step guide on how to create a new Menu Option.

1. Start Backoffice application.
2. Do you need to create a New Version for the Program Id? No=Go to Step 3.
 - a. Click on the Processing Options.
 - b. Click on the Header Button.
 - c. Click on the Copy Button.
 - i. Enter the Program Id, Select Copy From Version, Select To Version.
 - d. Click on the Submit Button.
 - e. Exit back to the Processing Options and then you can maintain the version.

This will create the New Version to be used for the Menu Option.

3. Click on the Handheld Menus. This Step will create the Menu Option.
 - a. Find a Menu Option that is not being used.
 - b. Click in the Top Line with the “?” in the Menu Column.
 - c. Enter the Menu Option number.
 - d. Enter the Description of the Menu.
 - e. Enter the Program Id. Use the Down arrow on the column and then select.
 - f. Enter the Version for the Program Id. Use the Down arrow on the column and then select.
 - g. Enter the System Name. Use the Down arrow on the column and then select.
 - h. Enter the JD Edwards release.
4. Click on the Scripts. This Step will create the Scripting for the Menu Option.
 - a. Select the Menu Option. Use the Down arrow on the column and then select.
 - b. Enter the Sequence number in which Field/Alias is prompted. Enter 1 for the first field, 2 for the second field, etc.
 - c. Enter the Prompting Text for each of the Fields/Alias selected.
 - d. Enter the other scripting fields as you get more experience.
5. Click on the Roles. This Step will allow your User to access the Menu Option.
 - a. Enter the Roles for the Menu Option.
6. Click on the User Listing. This Step will go through all the Roles in JD Edwards and update the users in WcBc.
 - a. Click on the Execute Role Interface.
7. Finished. Sign-on to the Handheld and review your results.

APPENDIX: Valid Field/Alias setup in WcBc.

Alias	Description
LITM	2 nd Item Number
FLITM	From 2 nd Item Number
LOCN	Inventory Location
LOCNE1	From Inventory Location
LOCNE2	To Inventory Location
LOTN	Lot Number
LOTF	From Lot Number
DOCO	Order Number
CYNO	Cycle Count Batch Number
MCU	Branch Plant
FMCU	From Branch Plant
TMCU	To Branch Plant
TRQT	Transaction Quantity
QTY	Quantity
UOM	Unit of Measure
FUOM	From Unit of Measure
RCD	Reason Code
STUN	Unit Id
BUNT	Business Unit
SBL	Sub Ledger
SBLT	Sub Ledger Type
ANI	Account Number
TREF	Reference Number
LPN	License Plate
FLPN	From License Plate
TLPN	To License Plate
NLBL	Number of Labels
TREX	Explanation
PSLIP	Packing Slip Number
DCTO	Order Type
VRMK	Vendor Remarks
LBLS	Number of Labels
PALL	Pallet Identification
FCLO	Close Purchase Order Option
NROU	Receipt Routing
SLOT	Supplier Lot Number
SOQS	Shipped Quantity
NUMB	Fixed Asset number
FTRQT	From Transaction Quantity
TTRQT	To Transaction Quantity
FQTY	From Quantity
OPSQ	Operation Sequence
CPNB	Component Number
RQDJ	Requested Date
QVAL	QM Test Value
DCT	Document Type
YN	Yes/No
DSC	Description
SOSN	Cancel Quantity
SOBK	Back Order Quantity

Appendix: Valid Function Key codes setup in WcBc.

Code	Description
01	F2=Calculator
02	F8=Calendar
03	F8=Finish
04	F3=Change B/P
05	Not Used
06	F4=Change Shift
07	F5=Part Inquiry
08	F9=P0 Search
09	F10=Virtual Location
10	F2=Set F3=Next F4=Previous
11	F2=Set F3=Nxt F4=Prv F5=Fast F8=Fin
12	F8=Finish F9=Clear Scans
13	F2=Set F3=Next F4=Prior F6=Reset Count

Appendix: Valid Screen Display codes setup in WcBc.

Code	Description
01	Item Description, Primary Location, U/M, Users Shift, and Branch Plant
02	Item Description, Unit Location, U/M, Users Shift, and User Branch Plnat
03	Item Description, Unit Location, U/M, Unit Quantity, Users Shift, and User B/P.
04	Display Users Shift & Branch Plant
05	Display all ZONES entered.
06	Display Downloaded fields.
07	Display Downloaded fields for Cycle Count.
08	Display Load, Pickslip, Unit, Location, Cust, Weight.